

Bluetooth®-interface

Description

The ZRS 6060 offers the possibility of transferring data to a Bluetooth® enabled computer within seconds.

For transferring data, the OBEX (Object Exchange) protocol is used. The following functions are provided:

- Navigation through the folders
- Upload or download files or folders
- Delete files or folders
- Create folders

To use the Bluetooth® functionality your computer must be equipped with the Bluetooth® antenna and the driver software must be installed and activated.

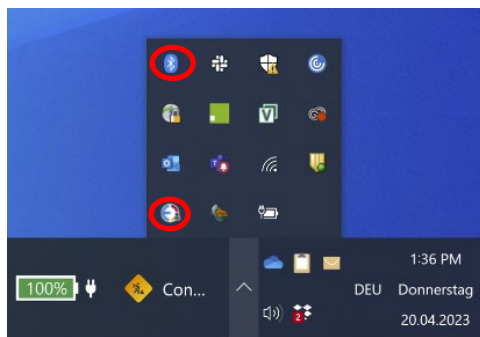
Only one device can connect to the ZRS 6060 at one time.

The transfer rate and the transfer distance depend on the Bluetooth® hardware and the environmental conditions.

The Bluetooth® graphical user interface depends on the software type or software version of the operating system. In the description below we used the Bluetooth® settings of Windows 10 Pro. The exact procedure will vary for different operating systems.

Establishing connection

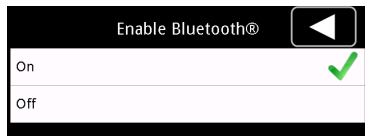
- ! The description below describes the Bluetooth® settings of Windows 10 Pro. If you have a different operating system the actual procedure might vary. Please contact your IT administrator if you face any problems due to different operating systems.
- ! The device which you want to connect via Bluetooth® to the ZRS 6060, must be visible, otherwise, the ZRS 6060 will not be able to detect it.





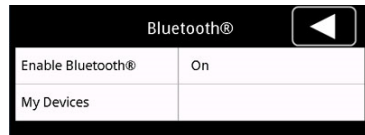
To access Bluetooth® settings,
Select **Start** > **Settings** > **Devices**
> **Bluetooth & other devices**.

The same Bluetooth® settings dialog is accessible in Windows 10 over Action center.

On the taskbar, select **action center** then select
Bluetooth > **Show Bluetooth Devices**.



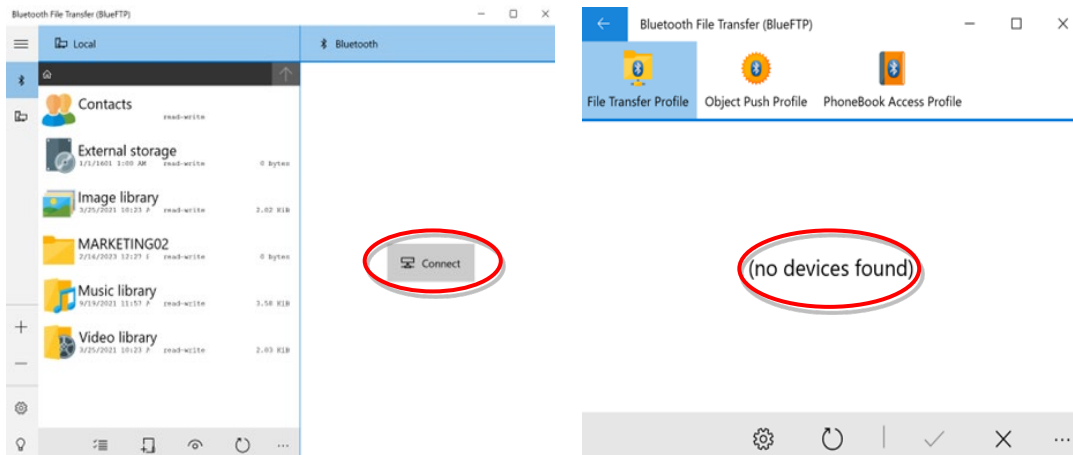
Press  and , then select “Setup” and “Bluetooth®” to enable Bluetooth® on your ZRS 6060.



Alternatively, you can select “Setup” and “Options” and then choose “Enable Bluetooth®”. If “Enable Bluetooth®” is off, the “My devices” and “File Transfer” are not available.

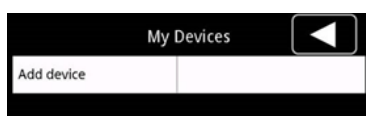
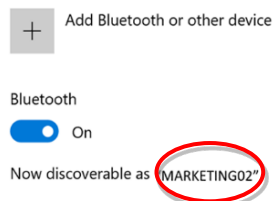
Please follow the instructions below in the exact described sequence.

1. Download free [BlueFTP](#) (Bluetooth File Transfer) software from [Microsoft](#) store.
2. Start BlueFTP software and click on “Connect”. At this stage “no devices found” appears.



Bluetooth & other devices

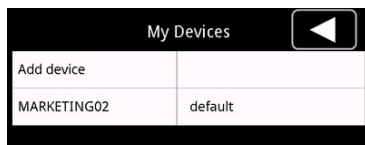
3. Then in **Bluetooth & other devices** find and note your PC’s name.



4. “Add device” to connect your computer. After the scanning process, visible Bluetooth® devices within reach of the ZRS 6060 are displayed.

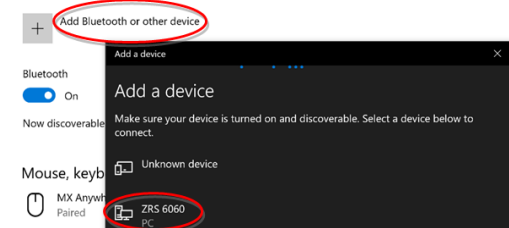


Select the desired device by pressing its name. By selecting a device, it will be set automatically as the default device.

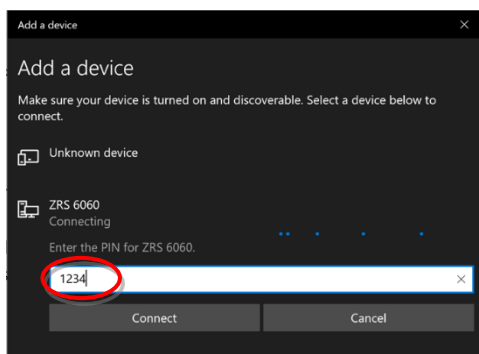


This pairing process will only have to be carried out once as long as the paired device is not removed from “My devices”. To get the ZRS 6060 ready to open the connection to your Bluetooth® hardware (computer), press the back arrow.

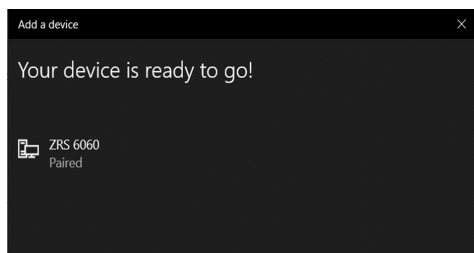
Bluetooth & other devices



5. In **Bluetooth & other devices** add your device ZRS 6060.

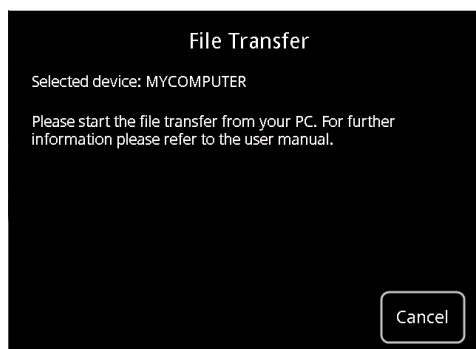


6. Enter the pin 1234 and “Connect”.

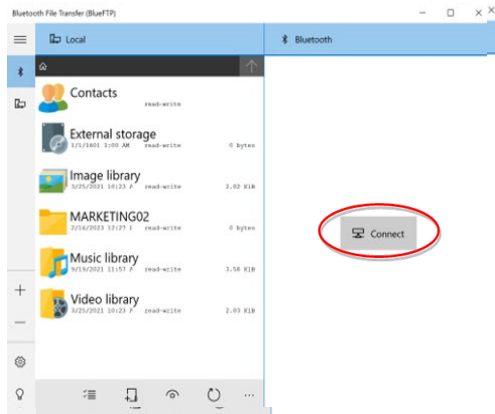


ZRS 6060 is paired and “your device is ready to go!”.

7. If ZRS 6060 could not be successfully connected or paired, first check **Airplane mode** of your PC and make sure is **OFF**, then run Bluetooth trouble-shooter from Windows and repeat step 5.



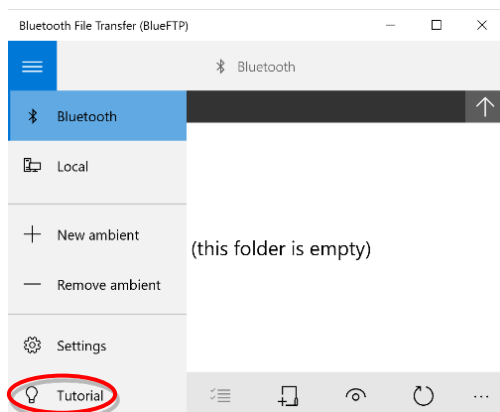
8. Press “File Transfer” in order to prepare the ZRS 6060 for Bluetooth® transfer.



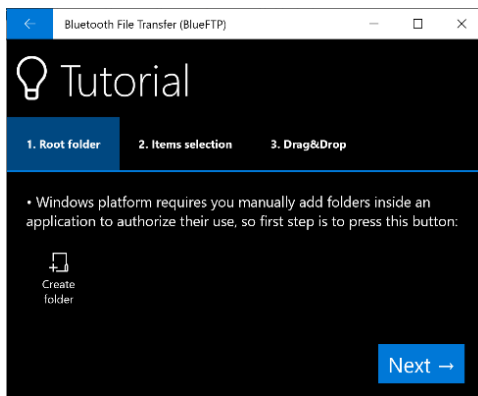
9. Start BlueFTP, press “Connect”.

10. If “no devices found” appears, close BlueFTP, remove ZRS 6060 from **Bluetooth & other devices** and repeat from step 5.
11. Choose ZRS 6060 and “Connect” for file transfer.
12. If an error message pops up, stating that BlueFTP could not connect to the device, then close BlueFTP and repeat from step 9.

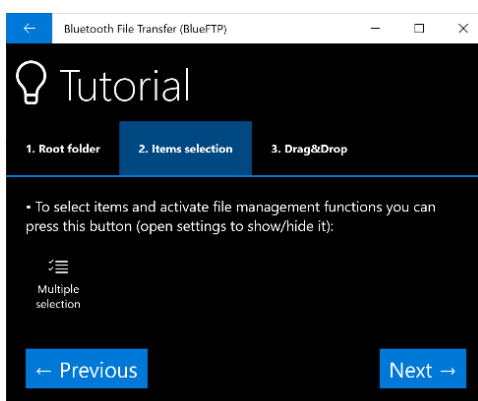
Data transferring



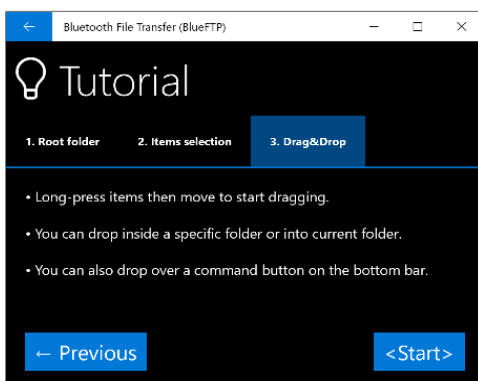
To configure the target folder for file transfer, open BlueFTP Tutorial and follow the instructions. This configuration will only have to be done for the first time.



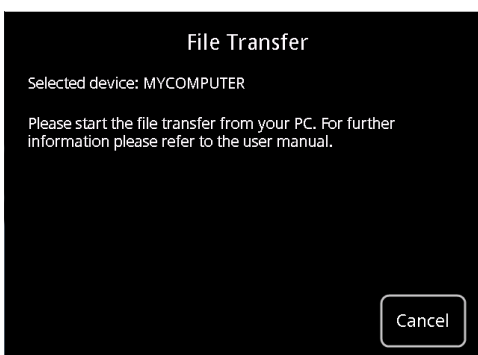
1. Press “Create folder” and choose an existing folder or create a new one on your PC, for example “ZRS Transfer”. Then press “NEXT”.



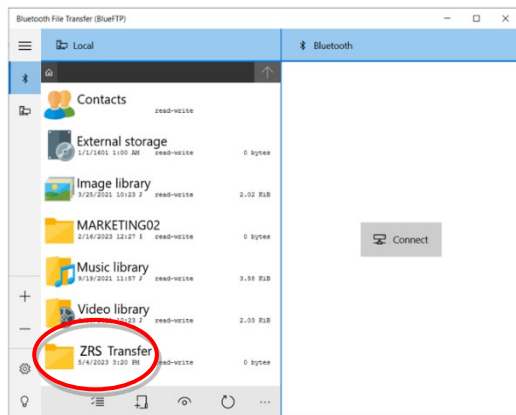
2. Read instruction and press “NEXT”.



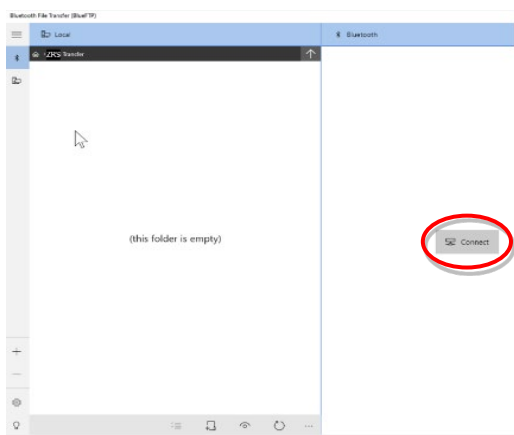
3. Read the instructions and press “Start”.



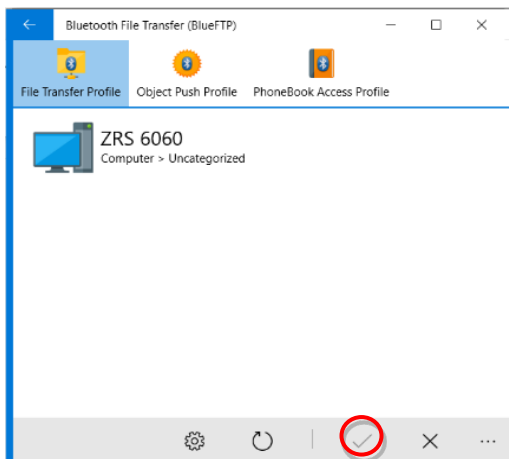
4. On the ZRS 6060 press “File Transfer” to prepare the ZRS 6060 for Bluetooth® transfer. When you see this message, you can proceed to set up your computer to start the file transfer.



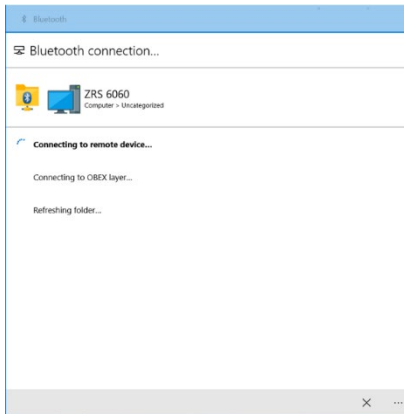
5. In main Bluetooth window choose the file you have selected in step 1 (ZRS Transfer).



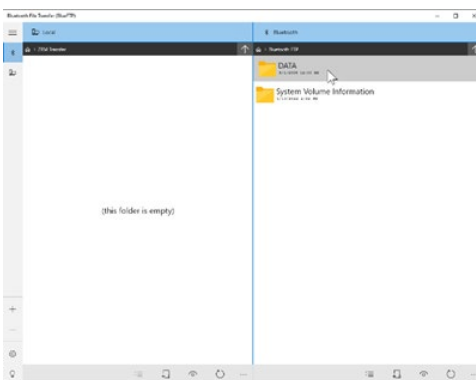
6. Press "Connect"



7. In BlueFTP choose ZRS 6060 and press "Accept".

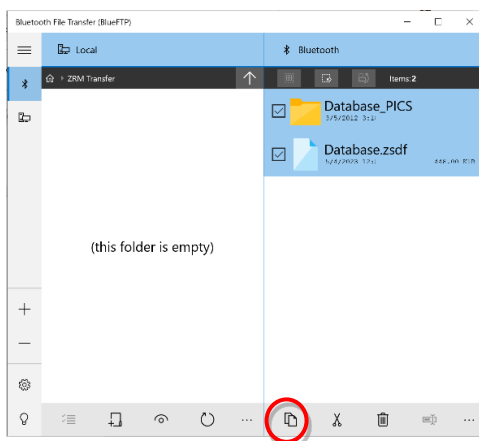


8. BlueFTP starts to connect to ZRS 6060.

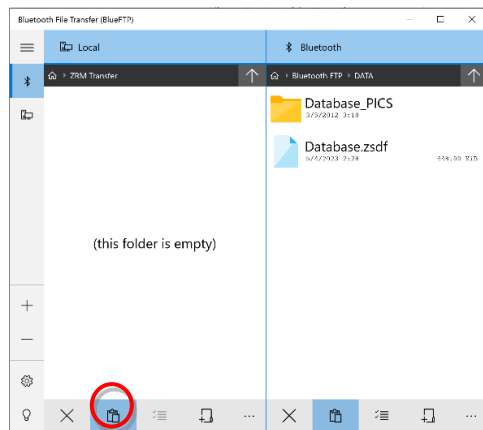


Once connected “DATA” folder appears. Click on “DATA” to access database file and

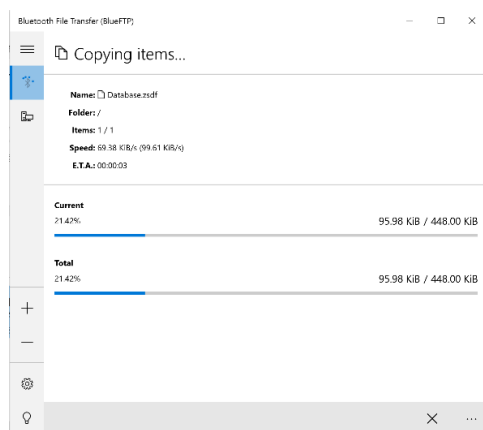
picture folder that contain the data you like to transfer.



9. Choose both database file (e.g. “Database.zsdf”) and picture folder (e.g. “Database-PICS”) and select “Copy” (or just drag and drop them to the local window).



10. Paste clipboard in ZRS Transfer folder.



11. Items start to be copied into ZRS Transfer file.